

FIVE STATE HONOR BAND

HIGH SCHOOL - SCALES

FLUTE

♩ = 120 or faster

C CONCERT MAJOR



Musical notation for the C Concert Major scale, starting on middle C (C4) and ascending to C5. The scale is written in treble clef with a 4/4 time signature. It consists of a series of eighth notes: C4, D4, E4, F4, G4, A4, B4, C5. A slur covers the notes from D4 to C5. The piece ends with a whole note C4.

F CONCERT MAJOR



Musical notation for the F Concert Major scale, starting on F4 and ascending to F5. The scale is written in treble clef with a 4/4 time signature. It consists of a series of eighth notes: F4, G4, A4, Bb4, C5, D5, E5, F5. A slur covers the notes from G4 to F5. The piece ends with a whole note F4.

Bb CONCERT MAJOR



Musical notation for the Bb Concert Major scale, starting on Bb4 and ascending to Bb5. The scale is written in treble clef with a 4/4 time signature. It consists of a series of eighth notes: Bb4, C5, D5, Eb5, F5, G5, Ab5, Bb5. A slur covers the notes from C5 to Bb5. The piece ends with a whole note Bb4.

Eb CONCERT MAJOR



Musical notation for the Eb Concert Major scale, starting on Eb4 and ascending to Eb5. The scale is written in treble clef with a 4/4 time signature. It consists of a series of eighth notes: Eb4, F4, G4, Ab4, Bb4, C5, D5, Eb5. A slur covers the notes from F4 to Eb5. The piece ends with a whole note Eb4.

Ab CONCERT MAJOR



Musical notation for the Ab Concert Major scale, starting on Ab4 and ascending to Ab5. The scale is written in treble clef with a 4/4 time signature. It consists of a series of eighth notes: Ab4, Bb4, C5, Db5, Eb5, F5, G5, Ab5. A slur covers the notes from Bb4 to Ab5. The piece ends with a whole note Ab4.

Db CONCERT MAJOR



Musical notation for the Db Concert Major scale, starting on Db4 and ascending to Db5. The scale is written in treble clef with a 4/4 time signature. It consists of a series of eighth notes: Db4, Eb4, F4, Gb4, Ab4, Bb4, C5, Db5. A slur covers the notes from Eb4 to Db5. The piece ends with a whole note Db4.

19 G CONCERT MAJOR



Musical notation for the G Concert Major scale, starting on G4 and ascending to G5. The scale is written in treble clef with a 4/4 time signature. It consists of a series of eighth notes: G4, A4, B4, C5, D5, E5, F#5, G5. A slur covers the notes from A4 to G5. The piece ends with a whole note G4.

CHROMATIC



Musical notation for the chromatic scale, starting on G4 and ascending to G5. The scale is written in treble clef with a 4/4 time signature. It consists of a series of eighth notes: G4, G#4, A4, Ab4, A4, A#4, B4, Bb4, B4, B#4, C5, Cb5, C5, C#5, D5, Db5, D5, D#5, E5, Eb5, E5, E#5, F5, Fb5, F5, F#5, G5. A slur covers the notes from G4 to G5. The piece ends with a whole note G4.

FIVE STATE HONOR BAND

HIGH SCHOOL - SCALES

OBOE

♩ = 120 or faster

C CONCERT MAJOR



Musical notation for the C Concert Major scale, starting on middle C (C4) and ascending to C5. The scale is written in treble clef with a 4/4 time signature. It consists of eight measures: four ascending eighth notes, two eighth notes beamed together, and two quarter notes. A slur covers the final six notes, and the piece ends with a whole note C5.

F CONCERT MAJOR



Musical notation for the F Concert Major scale, starting on F4 and ascending to F5. The scale is written in treble clef with a 4/4 time signature. It consists of eight measures: four ascending eighth notes, two eighth notes beamed together, and two quarter notes. A slur covers the final six notes, and the piece ends with a whole note F5.

Bb CONCERT MAJOR



Musical notation for the Bb Concert Major scale, starting on Bb4 and ascending to Bb5. The scale is written in treble clef with a 4/4 time signature. It consists of eight measures: four ascending eighth notes, two eighth notes beamed together, and two quarter notes. A slur covers the final six notes, and the piece ends with a whole note Bb5.

Eb CONCERT MAJOR



Musical notation for the Eb Concert Major scale, starting on Eb4 and ascending to Eb5. The scale is written in treble clef with a 4/4 time signature. It consists of eight measures: four ascending eighth notes, two eighth notes beamed together, and two quarter notes. A slur covers the final six notes, and the piece ends with a whole note Eb5.

Ab CONCERT MAJOR



Musical notation for the Ab Concert Major scale, starting on Ab4 and ascending to Ab5. The scale is written in treble clef with a 4/4 time signature. It consists of eight measures: four ascending eighth notes, two eighth notes beamed together, and two quarter notes. A slur covers the final six notes, and the piece ends with a whole note Ab5.

Db CONCERT MAJOR



Musical notation for the Db Concert Major scale, starting on Db4 and ascending to Db5. The scale is written in treble clef with a 4/4 time signature. It consists of eight measures: four ascending eighth notes, two eighth notes beamed together, and two quarter notes. A slur covers the final six notes, and the piece ends with a whole note Db5.

G CONCERT MAJOR



Musical notation for the G Concert Major scale, starting on G4 and ascending to G5. The scale is written in treble clef with a 4/4 time signature. It consists of eight measures: four ascending eighth notes, two eighth notes beamed together, and two quarter notes. A slur covers the final six notes, and the piece ends with a whole note G5.

CHROMATIC



Musical notation for the chromatic scale, starting on C4 and ascending to C5. The scale is written in treble clef with a 4/4 time signature. It consists of eight measures: four ascending eighth notes, two eighth notes beamed together, and two quarter notes. A slur covers the final six notes, and the piece ends with a whole note C5.



Musical notation for the chromatic scale, starting on C5 and descending to C4. The scale is written in treble clef with a 4/4 time signature. It consists of eight measures: four descending eighth notes, two eighth notes beamed together, and two quarter notes. A slur covers the final six notes, and the piece ends with a whole note C4.

FIVE STATE HONOR BAND

HIGH SCHOOL - SCALES

CLARINET

♩ = 120 or faster

C CONCERT MAJOR



Musical notation for the C Concert Major scale, starting on middle C (C4) and ascending to C5. The scale is written in treble clef with a key signature of one sharp (F#) and a 4/4 time signature. The notes are C4, D4, E4, F#4, G4, A4, B4, C5. The scale is marked with a slur and a fermata over the final note.

F CONCERT MAJOR



Musical notation for the F Concert Major scale, starting on F4 and ascending to F5. The scale is written in treble clef with a key signature of one sharp (F#) and a 4/4 time signature. The notes are F4, G4, A4, Bb4, C5, D5, E5, F5. The scale is marked with a slur and a fermata over the final note.

Bb CONCERT MAJOR



Musical notation for the Bb Concert Major scale, starting on Bb3 and ascending to Bb4. The scale is written in treble clef with a key signature of two flats (Bb, Eb) and a 4/4 time signature. The notes are Bb3, C4, D4, Eb4, F4, G4, Ab4, Bb4. The scale is marked with a slur and a fermata over the final note.

Eb CONCERT MAJOR



Musical notation for the Eb Concert Major scale, starting on Eb3 and ascending to Eb4. The scale is written in treble clef with a key signature of three flats (Eb, Ab, Db) and a 4/4 time signature. The notes are Eb3, F3, G3, Ab3, Bb3, C4, Db4, Eb4. The scale is marked with a slur and a fermata over the final note.

Ab CONCERT MAJOR



Musical notation for the Ab Concert Major scale, starting on Ab3 and ascending to Ab4. The scale is written in treble clef with a key signature of four flats (Ab, Bb, Eb, Fb) and a 4/4 time signature. The notes are Ab3, Bb3, C4, Db4, Eb4, Fb4, Gb4, Ab4. The scale is marked with a slur and a fermata over the final note.

Db CONCERT MAJOR



Musical notation for the Db Concert Major scale, starting on Db3 and ascending to Db4. The scale is written in treble clef with a key signature of five flats (Db, Eb, Fb, Gb, Ab) and a 4/4 time signature. The notes are Db3, Eb3, Fb3, Gb3, Ab3, Bb3, C4, Db4. The scale is marked with a slur and a fermata over the final note.

¹⁹ G CONCERT MAJOR



Musical notation for the G Concert Major scale, starting on G4 and ascending to G5. The scale is written in treble clef with a key signature of two sharps (F#, C#) and a 4/4 time signature. The notes are G4, A4, B4, C#4, D5, E5, F#5, G5. The scale is marked with a slur and a fermata over the final note.

CHROMATIC



Musical notation for the chromatic scale, starting on C4 and ascending to C5. The scale is written in treble clef with a key signature of one sharp (F#) and a 4/4 time signature. The notes are C4, C#4, D4, D#4, E4, E#4, F4, F#4, G4, G#4, A4, A#4, B4, B#4, C5. The scale is marked with a slur and a fermata over the final note.



Musical notation for the chromatic scale, starting on C5 and descending to C4. The scale is written in treble clef with a key signature of one sharp (F#) and a 4/4 time signature. The notes are C5, B#4, B4, A#4, A4, G#4, G4, F#4, F4, E#4, E4, D#4, D4, C#4, C4. The scale is marked with a slur and a fermata over the final note.

FIVE STATE HONOR BAND

HIGH SCHOOL - SCALES

E_b ALTO CLARINET / CONTRA-ALTO CLARINET

♩=120 or faster

C CONCERT MAJOR



Musical notation for the C Concert Major scale, starting on middle C (C4) and ascending to C5. The scale is written in treble clef with a key signature of two sharps (F# and C#) and a 4/4 time signature. The notes are: C4, D4, E4, F#4, G4, A4, B4, C5. The first six notes are beamed together, and the last note is a half note.

F CONCERT MAJOR



Musical notation for the F Concert Major scale, starting on F4 and ascending to F5. The scale is written in treble clef with a key signature of one sharp (F#) and a 4/4 time signature. The notes are: F4, G4, A4, B4, C5, D5, E5, F5. The first six notes are beamed together, and the last note is a half note.

B_b CONCERT MAJOR



Musical notation for the B_b Concert Major scale, starting on B₃ and ascending to B₄. The scale is written in treble clef with a key signature of one flat (B₃) and a 4/4 time signature. The notes are: B₃, C4, D4, E4, F4, G4, A4, B₄. The first six notes are beamed together, and the last note is a half note.

E_b CONCERT MAJOR



Musical notation for the E_b Concert Major scale, starting on E₃ and ascending to E₄. The scale is written in treble clef with a key signature of two flats (B₃ and E₃) and a 4/4 time signature. The notes are: E₃, F3, G3, A3, B₃, C4, D4, E₄. The first six notes are beamed together, and the last note is a half note.

A_b CONCERT MAJOR



Musical notation for the A_b Concert Major scale, starting on A₂ and ascending to A₃. The scale is written in treble clef with a key signature of two flats (F₃ and C₃) and a 4/4 time signature. The notes are: A₂, B₂, C₃, D₃, E₃, F₃, G₃, A₃. The first six notes are beamed together, and the last note is a half note.

D_b CONCERT MAJOR



Musical notation for the D_b Concert Major scale, starting on D₂ and ascending to D₃. The scale is written in treble clef with a key signature of three flats (B₂, F₂, and C₂) and a 4/4 time signature. The notes are: D₂, E₂, F₂, G₂, A₂, B₂, C₃, D₃. The first six notes are beamed together, and the last note is a half note.

¹⁹ G CONCERT MAJOR



Musical notation for the G Concert Major scale, starting on G₃ and ascending to G₄. The scale is written in treble clef with a key signature of three sharps (F#, C#, and G#) and a 4/4 time signature. The notes are: G₃, A₃, B₃, C₄, D₄, E₄, F₄, G₄. The first six notes are beamed together, and the last note is a half note.

CHROMATIC



Musical notation for the chromatic scale, starting on C₄ and ascending to C₅. The scale is written in treble clef with a 4/4 time signature. The notes are: C₄, C#₄, D₄, D#₄, E₄, E#₄, F₄, F#₄, G₄, G#₄, A₄, A#₄, B₄, B#₄, C₅. The notes are beamed together in groups of four.



Musical notation for the chromatic scale, starting on C₅ and descending to C₄. The scale is written in treble clef with a 4/4 time signature. The notes are: C₅, B₄, B₄^b, A₄, A₄^b, G₄, G₄^b, F₄, F₄^b, E₄, E₄^b, D₄, D₄^b, C₄. The notes are beamed together in groups of four.

FIVE STATE HONOR BAND

HIGH SCHOOL - SCALES

Bb BASS CLARINET / CONTRA-BASS CLARINET

♩ = 120 or faster

C CONCERT MAJOR



Musical notation for the C Concert Major scale, starting on middle C (C4) and ascending to C5. The scale is written in treble clef with a key signature of one sharp (F#) and a 4/4 time signature. The notes are C4, D4, E4, F#4, G4, A4, B4, C5. The descending part of the scale is C5, B4, A4, G4, F#4, E4, D4, C4. A slur covers the entire scale.

F CONCERT MAJOR



Musical notation for the F Concert Major scale, starting on F4 and ascending to F5. The scale is written in treble clef with a key signature of one sharp (F#) and a 4/4 time signature. The notes are F4, G4, A4, B4, C5, D5, E5, F5. The descending part of the scale is F5, E5, D5, C5, B4, A4, G4, F4. A slur covers the entire scale.

Bb CONCERT MAJOR



Musical notation for the Bb Concert Major scale, starting on Bb3 and ascending to Bb4. The scale is written in treble clef with a key signature of two flats (Bb, Fb) and a 4/4 time signature. The notes are Bb3, C4, D4, Eb4, F4, G4, Ab4, Bb4. The descending part of the scale is Bb4, Ab4, G4, F4, Eb4, D4, C4, Bb3. A slur covers the entire scale.

Eb CONCERT MAJOR



Musical notation for the Eb Concert Major scale, starting on Eb3 and ascending to Eb4. The scale is written in treble clef with a key signature of three flats (Eb, Bb, Fb) and a 4/4 time signature. The notes are Eb3, F3, G3, Ab3, Bb3, C4, Db4, Eb4. The descending part of the scale is Eb4, Db4, C4, Bb3, Ab3, G3, F3, Eb3. A slur covers the entire scale.

Ab CONCERT MAJOR



Musical notation for the Ab Concert Major scale, starting on Ab3 and ascending to Ab4. The scale is written in treble clef with a key signature of four flats (Ab, Eb, Bb, Fb) and a 4/4 time signature. The notes are Ab3, Bb3, C4, Db4, Eb4, F4, Gb4, Ab4. The descending part of the scale is Ab4, Gb4, F4, Eb4, Db4, C4, Bb3, Ab3. A slur covers the entire scale.

Db CONCERT MAJOR



Musical notation for the Db Concert Major scale, starting on Db3 and ascending to Db4. The scale is written in treble clef with a key signature of five flats (Db, Ab, Eb, Bb, Fb) and a 4/4 time signature. The notes are Db3, Eb3, F3, Gb3, Ab3, Bb3, C4, Db4. The descending part of the scale is Db4, C4, Bb3, Ab3, Gb3, F3, Eb3, Db3. A slur covers the entire scale.

¹⁹ G CONCERT MAJOR



Musical notation for the G Concert Major scale, starting on G4 and ascending to G5. The scale is written in treble clef with a key signature of two sharps (F#, C#) and a 4/4 time signature. The notes are G4, A4, B4, C#4, D5, E5, F#5, G5. The descending part of the scale is G5, F#5, E5, D5, C#4, B4, A4, G4. A slur covers the entire scale.

CHROMATIC



Musical notation for the chromatic scale, starting on C4 and ascending to C5. The scale is written in treble clef with a key signature of one sharp (F#) and a 4/4 time signature. The notes are C4, C#4, D4, D#4, E4, E#4, F4, F#4, G4, G#4, A4, A#4, B4, B#4, C5. A slur covers the entire scale.



Musical notation for the chromatic scale, starting on C5 and descending to C4. The scale is written in treble clef with a key signature of one sharp (F#) and a 4/4 time signature. The notes are C5, B#4, B4, A#4, A4, G#4, G4, F#4, F4, E#4, E4, D#4, D4, C#4, C4. A slur covers the entire scale.

FIVE STATE HONOR BAND

HIGH SCHOOL - SCALES

E♭ ALTO SAXOPHONE / BARITONE SAXOPHONE

♩ = 120 or faster

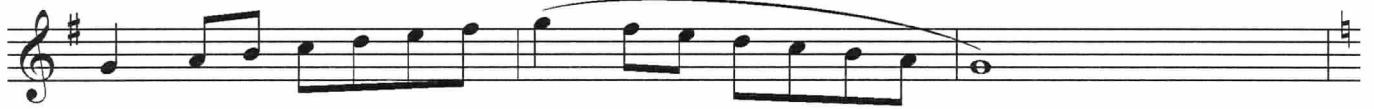
C CONCERT MAJOR



F CONCERT MAJOR



B♭ CONCERT MAJOR



E♭ CONCERT MAJOR



A♭ CONCERT MAJOR



D♭ CONCERT MAJOR



19 G CONCERT MAJOR



CHROMATIC



FIVE STATE HONOR BAND

HIGH SCHOOL - SCALES

Bb TENOR SAXOPHONE

♩ = 120 or faster

C CONCERT MAJOR



F CONCERT MAJOR



Bb CONCERT MAJOR



Eb CONCERT MAJOR



Ab CONCERT MAJOR



Db CONCERT MAJOR



¹⁹ G CONCERT MAJOR



CHROMATIC



FIVE STATE HONOR BAND
HIGH SCHOOL - SCALES
TRUMPET / BARITONE T.C.

♩ = 120 or faster

C CONCERT MAJOR



Musical notation for the C Concert Major scale, starting on middle C (C4) and ascending to C5. The scale is written in treble clef with a key signature of one sharp (F#) and a 4/4 time signature. The notes are C4, D4, E4, F#4, G4, A4, B4, C5. The descending part of the scale is C5, B4, A4, G4, F#4, E4, D4, C4. A slur covers the entire scale.

F CONCERT MAJOR



Musical notation for the F Concert Major scale, starting on F4 and ascending to F5. The scale is written in treble clef with a key signature of two sharps (F# and C#) and a 4/4 time signature. The notes are F4, G4, A4, B4, C#4, D5, E5, F5. The descending part of the scale is F5, E5, D5, C#4, B4, A4, G4, F4. A slur covers the entire scale.

Bb CONCERT MAJOR



Musical notation for the Bb Concert Major scale, starting on Bb4 and ascending to Bb5. The scale is written in treble clef with a key signature of two flats (Bb and Eb) and a 4/4 time signature. The notes are Bb4, C5, D5, Eb5, F5, G5, Ab5, Bb5. The descending part of the scale is Bb5, Ab5, G5, F5, Eb5, D5, C5, Bb4. A slur covers the entire scale.

Eb CONCERT MAJOR



Musical notation for the Eb Concert Major scale, starting on Eb4 and ascending to Eb5. The scale is written in treble clef with a key signature of three flats (Eb, Bb, and Fb) and a 4/4 time signature. The notes are Eb4, F4, G4, Ab4, Bb4, C5, D5, Eb5. The descending part of the scale is Eb5, D5, C5, Bb4, Ab4, G4, F4, Eb4. A slur covers the entire scale.

Ab CONCERT MAJOR



Musical notation for the Ab Concert Major scale, starting on Ab4 and ascending to Ab5. The scale is written in treble clef with a key signature of four flats (Ab, Bb, Eb, and Fb) and a 4/4 time signature. The notes are Ab4, Bb4, C5, D5, Eb5, F5, G5, Ab5. The descending part of the scale is Ab5, G5, F5, Eb5, D5, C5, Bb4, Ab4. A slur covers the entire scale.

Db CONCERT MAJOR



Musical notation for the Db Concert Major scale, starting on Db4 and ascending to Db5. The scale is written in treble clef with a key signature of five flats (Db, Eb, Ab, Bb, and Fb) and a 4/4 time signature. The notes are Db4, Eb4, F4, G4, Ab4, Bb4, C5, Db5. The descending part of the scale is Db5, C5, Bb4, Ab4, G4, F4, Eb4, Db4. A slur covers the entire scale.

G CONCERT MAJOR



Musical notation for the G Concert Major scale, starting on G4 and ascending to G5. The scale is written in treble clef with a key signature of two sharps (F# and C#) and a 4/4 time signature. The notes are G4, A4, B4, C#4, D5, E5, F#5, G5. The descending part of the scale is G5, F#5, E5, D5, C#4, B4, A4, G4. A slur covers the entire scale.

CHROMATIC



Musical notation for the chromatic scale, starting on C4 and ascending to C5. The scale is written in treble clef with a 4/4 time signature. The notes are C4, C#4, D4, D#4, E4, E#4, F4, F#4, G4, G#4, A4, A#4, B4, B#4, C5. The descending part of the scale is C5, B#4, B4, A#4, A4, G#4, G4, F#4, F4, E#4, E4, D#4, D4, C#4, C4. A slur covers the entire scale.

FIVE STATE HONOR BAND

HIGH SCHOOL - SCALES

HORN

♩ = 120 or faster

C CONCERT MAJOR



Musical notation for the C Concert Major scale, starting on middle C (C4) and ascending to C5. The scale is written in treble clef with a key signature of one sharp (F#) and a 4/4 time signature. The notes are C4, D4, E4, F#4, G4, A4, B4, C5. The first four notes are beamed together, and the last four notes are also beamed together. A slur covers the entire scale.

F CONCERT MAJOR



Musical notation for the F Concert Major scale, starting on F4 and ascending to F5. The scale is written in treble clef with a key signature of two sharps (F# and C#) and a 4/4 time signature. The notes are F4, G4, A4, B4, C#5, D5, E5, F5. The first four notes are beamed together, and the last four notes are also beamed together. A slur covers the entire scale.

Bb CONCERT MAJOR



Musical notation for the Bb Concert Major scale, starting on Bb4 and ascending to Bb5. The scale is written in treble clef with a key signature of two flats (Bb and Eb) and a 4/4 time signature. The notes are Bb4, C5, D5, Eb5, F5, G5, Ab5, Bb5. The first four notes are beamed together, and the last four notes are also beamed together. A slur covers the entire scale.

Eb CONCERT MAJOR



Musical notation for the Eb Concert Major scale, starting on Eb4 and ascending to Eb5. The scale is written in treble clef with a key signature of three flats (Eb, Bb, and Fb) and a 4/4 time signature. The notes are Eb4, F4, G4, Ab4, Bb4, C5, Db5, Eb5. The first four notes are beamed together, and the last four notes are also beamed together. A slur covers the entire scale.

Ab CONCERT MAJOR



Musical notation for the Ab Concert Major scale, starting on Ab4 and ascending to Ab5. The scale is written in treble clef with a key signature of four flats (Ab, Bb, Eb, and Fb) and a 4/4 time signature. The notes are Ab4, Bb4, C5, Db5, Eb5, F5, G5, Ab5. The first four notes are beamed together, and the last four notes are also beamed together. A slur covers the entire scale.

Db CONCERT MAJOR



Musical notation for the Db Concert Major scale, starting on Db4 and ascending to Db5. The scale is written in treble clef with a key signature of five flats (Db, Eb, Fb, Cb, and Gb) and a 4/4 time signature. The notes are Db4, Eb4, F4, Gb4, Ab4, Bb4, C5, Db5. The first four notes are beamed together, and the last four notes are also beamed together. A slur covers the entire scale.

19 G CONCERT MAJOR



Musical notation for the G Concert Major scale, starting on G4 and ascending to G5. The scale is written in treble clef with a key signature of two sharps (F# and C#) and a 4/4 time signature. The notes are G4, A4, B4, C#5, D5, E5, F#5, G5. The first four notes are beamed together, and the last four notes are also beamed together. A slur covers the entire scale.

CHROMATIC



Musical notation for the chromatic scale, starting on C4 and ascending to C5. The scale is written in treble clef with a key signature of one sharp (F#) and a 4/4 time signature. The notes are C4, C#4, D4, D#4, E4, E#4, F4, F#4, G4, G#4, A4, A#4, B4, B#4, C5. The notes are beamed in groups of four.



Musical notation for the chromatic scale, starting on C5 and descending to C4. The scale is written in treble clef with a key signature of one sharp (F#) and a 4/4 time signature. The notes are C5, B#4, B4, A#4, A4, G#4, G4, F#4, F4, E#4, E4, D#4, D4, C#4, C4. The notes are beamed in groups of four.

FIVE STATE HONOR BAND

HIGH SCHOOL - SCALES

TROMBONE / BARITONE B.C. / BASSOON

♩ = 120 or faster

C CONCERT MAJOR

Musical notation for the C Concert Major scale in bass clef, 4/4 time. The scale consists of a half note C, followed by quarter notes D, E, F, G, A, B, and a half note C. A slur covers the notes from D to B.

F CONCERT MAJOR

Musical notation for the F Concert Major scale in bass clef, 4/4 time. The scale consists of a half note F, followed by quarter notes G, A, Bb, C, D, E, and a half note F. A slur covers the notes from G to E.

Bb CONCERT MAJOR

Musical notation for the Bb Concert Major scale in bass clef, 4/4 time. The scale consists of a half note Bb, followed by quarter notes C, D, Eb, F, G, A, and a half note Bb. A slur covers the notes from C to A.

Eb CONCERT MAJOR

Musical notation for the Eb Concert Major scale in bass clef, 4/4 time. The scale consists of a half note Eb, followed by quarter notes F, G, Ab, Bb, C, D, and a half note Eb. A slur covers the notes from F to D.

Ab CONCERT MAJOR

Musical notation for the Ab Concert Major scale in bass clef, 4/4 time. The scale consists of a half note Ab, followed by quarter notes Bb, C, Db, Eb, F, G, and a half note Ab. A slur covers the notes from Bb to G.

Db CONCERT MAJOR

Musical notation for the Db Concert Major scale in bass clef, 4/4 time. The scale consists of a half note Db, followed by quarter notes Eb, F, Gb, Ab, Bb, C, and a half note Db. A slur covers the notes from Eb to C.

19 G CONCERT MAJOR

Musical notation for the G Concert Major scale in bass clef, 4/4 time. The scale consists of a half note G, followed by quarter notes A, B, C, D, E, F#, and a half note G. A slur covers the notes from A to F#.

CHROMATIC

Musical notation for the chromatic scale in bass clef, 4/4 time. The scale consists of quarter notes: C, C#, D, D#, E, E#, F, F#, G, G#, A, A#, B, B#, C. A slur covers the entire scale.

FIVE STATE HONOR BAND

HIGH SCHOOL - SCALES

TUBA

♩ = 120 or faster

C CONCERT MAJOR

Musical notation for the C Concert Major scale in bass clef, 4/4 time. The scale consists of eight measures: C4, C4-D4, C4-D4-E4, C4-D4-E4-F4, C4-D4-E4-F4-G4, C4-D4-E4-F4-G4-A4, C4-D4-E4-F4-G4-A4-B4, and C5. A slur covers the final six notes.

F CONCERT MAJOR

Musical notation for the F Concert Major scale in bass clef, 4/4 time. The scale consists of eight measures: F3, F3-G3, F3-G3-A3, F3-G3-A3-B3, F3-G3-A3-B3-C4, F3-G3-A3-B3-C4, F3-G3-A3-B3-C4, and F4. A slur covers the final six notes.

Bb CONCERT MAJOR

Musical notation for the Bb Concert Major scale in bass clef, 4/4 time. The scale consists of eight measures: Bb3, Bb3-C4, Bb3-C4-D4, Bb3-C4-D4-E4, Bb3-C4-D4-E4-F4, Bb3-C4-D4-E4-F4, Bb3-C4-D4-E4-F4, and Bb4. A slur covers the final six notes.

Eb CONCERT MAJOR

Musical notation for the Eb Concert Major scale in bass clef, 4/4 time. The scale consists of eight measures: Eb3, Eb3-F3, Eb3-F3-G3, Eb3-F3-G3-A3, Eb3-F3-G3-A3-B3, Eb3-F3-G3-A3-B3, Eb3-F3-G3-A3-B3, and Eb4. A slur covers the final six notes.

Ab CONCERT MAJOR

Musical notation for the Ab Concert Major scale in bass clef, 4/4 time. The scale consists of eight measures: Ab3, Ab3-Bb3, Ab3-Bb3-C4, Ab3-Bb3-C4-D4, Ab3-Bb3-C4-D4-E4, Ab3-Bb3-C4-D4-E4, Ab3-Bb3-C4-D4-E4, and Ab4. A slur covers the final six notes.

Db CONCERT MAJOR

Musical notation for the Db Concert Major scale in bass clef, 4/4 time. The scale consists of eight measures: Db3, Db3-Eb3, Db3-Eb3-F3, Db3-Eb3-F3-G3, Db3-Eb3-F3-G3-A3, Db3-Eb3-F3-G3-A3, Db3-Eb3-F3-G3-A3, and Db4. A slur covers the final six notes.

¹⁹ G CONCERT MAJOR

Musical notation for the G Concert Major scale in bass clef, 4/4 time. The scale consists of eight measures: G3, G3-A3, G3-A3-B3, G3-A3-B3-C4, G3-A3-B3-C4-D4, G3-A3-B3-C4-D4, G3-A3-B3-C4-D4, and G4. A slur covers the final six notes.

CHROMATIC

Musical notation for the chromatic scale in bass clef, 4/4 time. The scale consists of eight measures: C4, C#4, D4, D#4, E4, E#4, F4, F#4, G4, G#4, A4, A#4, B4, B#4, and C5.

Musical notation for the chromatic scale in bass clef, 4/4 time. The scale consists of eight measures: C5, B4, Bb4, Ab4, G4, Gb4, F4, Fb4, E4, Eb4, D4, Db4, C4, Cb4, and B3.

FIVE STATE HONOR BAND
HIGH SCHOOL - SCALES
MALLETS

♩ = 120 or faster

C CONCERT MAJOR

Musical notation for C Concert Major scale in 4/4 time, starting on middle C. The scale consists of eight eighth notes ascending and eight eighth notes descending, with a final whole note C. A slur covers the entire scale.

F CONCERT MAJOR

Musical notation for F Concert Major scale in 4/4 time, starting on F4. The scale consists of eight eighth notes ascending and eight eighth notes descending, with a final whole note F. A slur covers the entire scale.

Bb CONCERT MAJOR

Musical notation for Bb Concert Major scale in 4/4 time, starting on Bb4. The scale consists of eight eighth notes ascending and eight eighth notes descending, with a final whole note Bb. A slur covers the entire scale.

Eb CONCERT MAJOR

Musical notation for Eb Concert Major scale in 4/4 time, starting on Eb4. The scale consists of eight eighth notes ascending and eight eighth notes descending, with a final whole note Eb. A slur covers the entire scale.

Ab CONCERT MAJOR

Musical notation for Ab Concert Major scale in 4/4 time, starting on Ab4. The scale consists of eight eighth notes ascending and eight eighth notes descending, with a final whole note Ab. A slur covers the entire scale.

Db CONCERT MAJOR

Musical notation for Db Concert Major scale in 4/4 time, starting on Db4. The scale consists of eight eighth notes ascending and eight eighth notes descending, with a final whole note Db. A slur covers the entire scale.

G CONCERT MAJOR

Musical notation for G Concert Major scale in 4/4 time, starting on G4. The scale consists of eight eighth notes ascending and eight eighth notes descending, with a final whole note G. A slur covers the entire scale.

CHROMATIC

Musical notation for Chromatic scale in 4/4 time, starting on G4. The scale consists of eight eighth notes ascending and eight eighth notes descending, with a final whole note G. A slur covers the entire scale.

